



Flexenergy Ltd Unit 1 Station Road Ind Est Station Road Methil Fife Scotland KY8 3HA
T: +44 (0)845 644 3793 F: +44 (0)845 644 3893 E: office@flexenergy.co.uk
W: www.flexenergy.co.uk W: www.flexalen.co.uk

Flexalen 600 **Pre-Insulated Pipe Range**

For more detailed information on Flexalen 600, please visit our website at www.flexenergy.co.uk



We are an experienced team with over 50 years experience in pre-insulated pipes. We hold the UK's largest, most extensive stock of pre-insulated pipe products.



We are proud to sell the world's finest pre-insulated pipe products for ...

- **District Heating**
- **Biomass/Renewables**
- **Domestic Hot Water**
- **Chilled Water applications**

To meet the exacting demands of UK specifiers, consultants and discerning contractors we only stock the superior "Flexalen" brand of pre-insulated plastic pipes.

Our team of dedicated sales staff are trained in all aspects of pre-insulated pipes and their application. We aim to give first class information in the use, price and delivery of materials.

We offer a pipe sizing service for clients who need assistance in assessing the correct pipe diameters to use on their projects.

Our UK based stock holding allows us to deliver most products to site within 2 -3 days, and we can draw on factory held stock materials if required, again usually within 2 -3 days.

In recognition of our close working relationship, Thermaflex Flexalen awarded us the status of "Certified System Partner" for the UK and Ireland, thus ensuring that the highest professional standards in selling are allied to the highest standard of pre-insulated pipe manufactured in the world today.



About FLEXALEN products

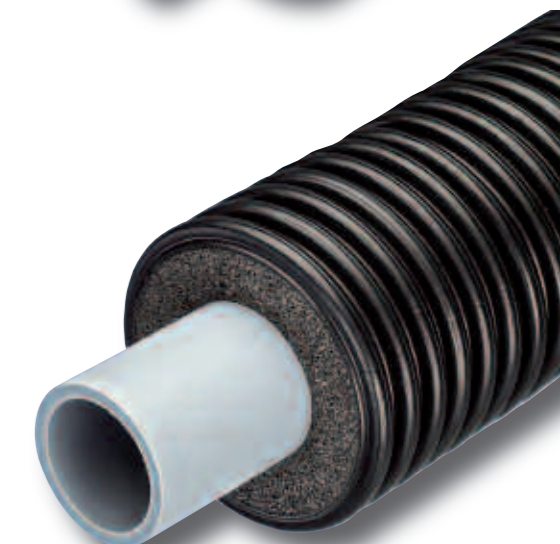
Thermaflex Flexalen is the market leader in the manufacture of pre insulated pipes, supplying products & services throughout the world for over 30 years. All our products are designed to be environmentally friendly and energy-saving.

Flexalen pre-insulated pipes offer engineered solutions for a wide variety of renewable/sustainable energy technologies such as solar, biomass, CHP, geothermal, district & community heating, cooling & chilled water networks.



Flexalen 600 Pre-insulated Pipe Applications...

- **Heating**
- **Hot Water Systems**
- **Chilled Water**



FLEXALEN 600
Pre-Insulated Pipe

Key Features

- **Fully Welded Joints**
Flexalen 600 is jointed using a full range of electrofusion fittings - tees/elbows/reducers/flanges etc.

Simple building to building jobs can be installed using our unique compression fittings for connection to other materials.
- **High Flexibility**
Flexalen 600 is highly flexible and easy to work with on site. Example : twin 25mm pipe bend radius = 600mm!
- **All Plastic System**
No Corrosion - Fit and forget - No maintenance!
- **High Quality Foam**
Superior performance.



FLEXALEN 600
Pre-Insulated Pipe System

Overview

Coiled Pipes
(operating max 95°C @ 8 bar)

- **Coiled Twin Pipes**
Twin pipes range from 25mm to 63mm
(see table for full size and dimension information)
- **Coiled Single Pipes**
Single pipe range from 25mm to 110mm
(see table for full size and dimension information)

Straight Length Pipes
(operating max 95°C @ 8 bar)

- **Single pipe range from 63mm to 225mm**
(see table for full size and dimension information)



Expansion

The inherent elasticity of Polybutene carrier pipe allows the total pipe system to self-compensate therefore, unlike steel systems, no expensive expansion loops or bellows are required!

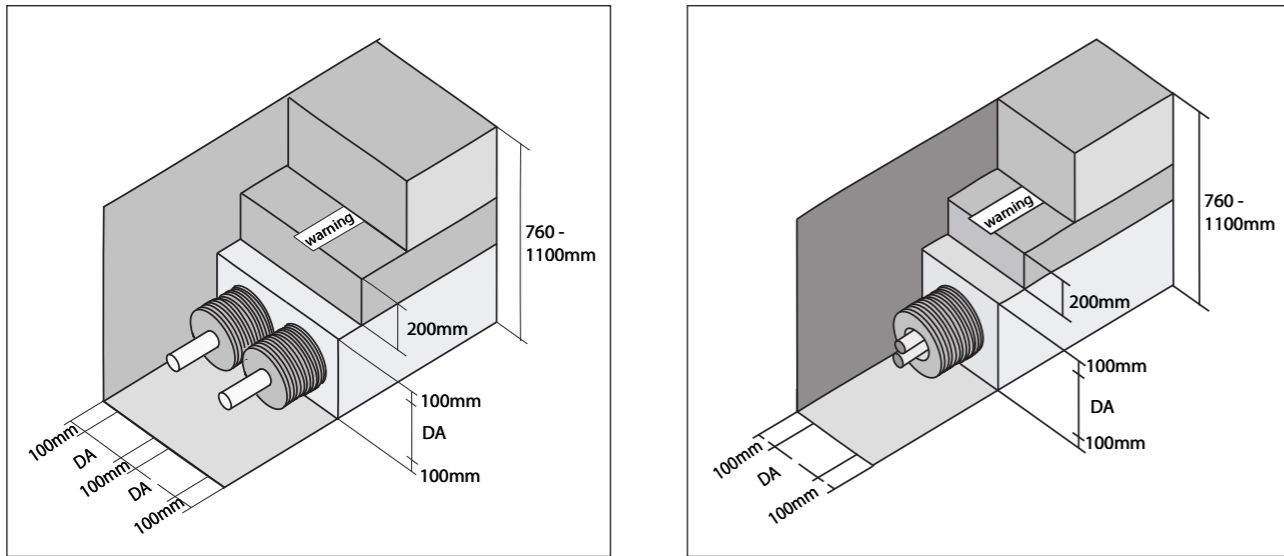
Building Entry - There are several ways to enter a building with Flexalen 600.....



* Where on line entry is used we recommend the use of our clamps to prevent expansion stress on the transition fitting

Trench Details and Requirments - A compressed sand bed (no coarse grains) of at least 100mm all around the pipe. Usually further backfilling is done with spoil taken from the trench provided it is compactable and contains an element of fine grained material. Final top material should be suitable for road surface wear in a traffic area, or humus material if situated in field type areas.

Depth - Road Areas: Min. Cover 800mm Non Traffic Areas Min. Cover 500mm



Above Ground Applications - Flexalen 600 can be used above ground, either in building or external. However it is vital that Flexalen 600 is supported along its entire length on suitable cable tray or an angle bar bed. In both cases suitably strong ties must be used. Ties must be placed no more that 1mtr apart. This applies to both horizontal and vertical pipelines.

FLEXALEN 600 Pre-Insulated Pipes

Dimensions - Coiled Pipes

Applications - Heating / Hot Water / Chilled Water

Product Code	Casing Size (mm)	Carrier Pipe OD (mm)	Carrier Pipe ID (mm)	Carrier Pipe Wall Thickness (mm)	No. of Carrier Pipes	Weight (kg/m)	Minimum Bending Radius (m)	Inch Size	Max Coil Sizes (m)	DN
VS-RS125A2/25	125	25	20.4	2.3	2	1.4	0.6	3/4	150	20
VS-RS125A2/32	125	32	26	3	2	1.6	0.6	1	150	25
VS-RS160A2/40	160	40	32.6	3.7	2	2.5	0.8	1 1/4	100	32
VS-RS160A2/50	160	50	40.8	4.6	2	3	0.8	1 1/2	100	40
VS-RS200A2/63	200	63	51.4	5.8	2	4.25	1.25	2	50	50
VS-RS50A25	50	25	20.4	2.3	1	0.37	0.3	3/4	200	20
VS-RS63A32	63	32	26.2	2.9	1	0.58	0.4	1	200	25
VS-RS75A40	75	40	32.6	3.7	1	0.86	0.5	1 1/4	200	32
VS-RS90A50	90	50	40.8	4.6	1	1.21	0.6	1 1/2	150	40
VS-RS125A63	125	63	51.4	5.8	1	2.05	0.8	2	150	50
VS-RS125A75	125	75	61.4	6.8	1	2.89	0.8	2 1/2	100	65
VS-RS160A90	160	90	73.6	8.2	1	3.6	1	3	100	80
VS-RS200A110	200	110	90	10	1	5	1.25	4	50	100

FLEXALEN 600 Pre-Insulated Pipes

Dimensions - Straight Length Pipes

Applications - Heating / Hot Water / Chilled Water

Product Code	Casing Size (mm)	Carrier Pipe OD (mm)	Carrier Pipe ID (mm)	Carrier Pipe Wall Thickness (mm)	No. of Carrier Pipes	Weight (kg/m)	Minimum Bending Radius (m)	Inch Size	Length (m)	DN
F-SL125A63/6	125	63	51.4	5.8	1	2.8	10	2	6	50
F-SL160A75/6	160	75	61.4	6.8	1	4.4	12	2 1/4	6	65
F-SL160A90/6	160	90	73.6	8.2	1	4.8	12	3	6	80
F-SL200A110/6	200	110	90	10	1	6.3	16	4	6	100
F-SL200A125/12	200	125	102.2	11.4	1	7.4	16	4	12	100
FV-R225A140/6	225	140	114.6	12.7	1	9	18	5	12	125
FV-R250A160/12	250	160	130.8	14.6	1	11.7	20	6	12	150
FV-R315A225/5.8	315	225	184	20.5	1	22	26	8	5.8	200

Flexenergy reserve the right to change, amend or remove the products and services featured in the publication without prior notice.